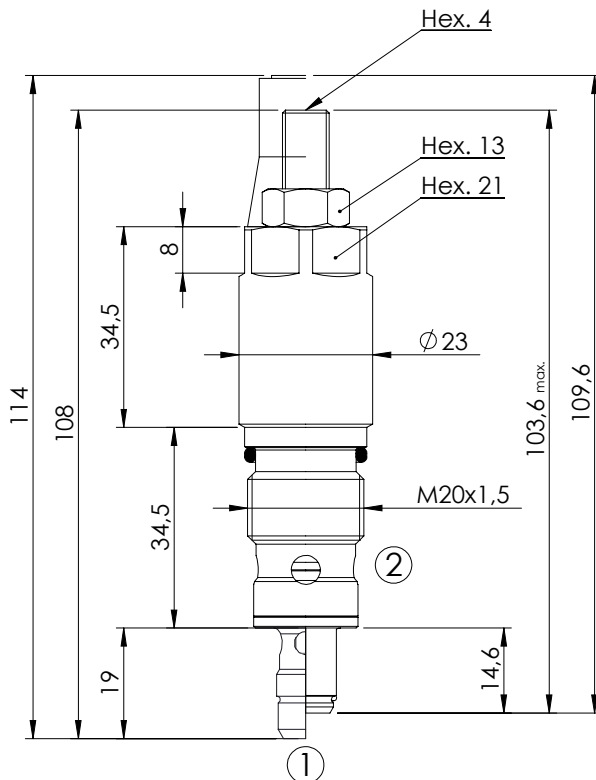


RELIEF VALVE

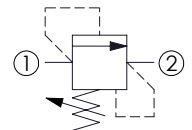
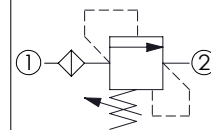
CPLN-XXX-DHNA

**DIRECT ACTING
STABILIZED PISTON
HARDENED SEAT**



With Filter

Without Filter



SPECIFICATIONS

Max. operating pressure: 500 bar

Max. operating pressure on T: 350 bar

Rated flow: See table

Cavity: VP000008

Weight: 0,17 kg

SEALING CAP

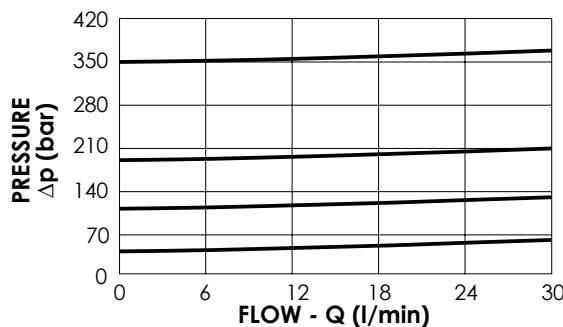
Ordering code:
AT000020



NOTES

Installation torque: 40-45 Nm

Seal kit: RC700008



ORDERING CODES

Quick code	Description	Rated flow (l/min)	Standard setting (bar, Q=5 l/min)	Adjustment range (bar)	Pressure increase (bar/turn)	Options
CP000401	CPLN-023-DHNA-HF-008-N500	20	350	150 - 500	150	With Filter
CP000411	CPLN-030-DHNA-HF-008-N420	30	350	250-420	104	With Filter
CP000082	CPLN-030-DHNA-HN-008-N350	30	350	100-350	91	Without Filter
CP000083	CPLN-030-DHNA-HN-008-N200	30	200	50-210	42	Without Filter
CP000084	CPLN-030-DHNA-HN-008-N100	30	100	30-100	20	Without Filter
CP000085	CPLN-030-DHNA-HN-008-N050	30	50	10-50	10	Without Filter