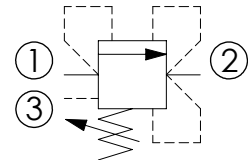
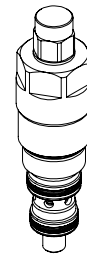
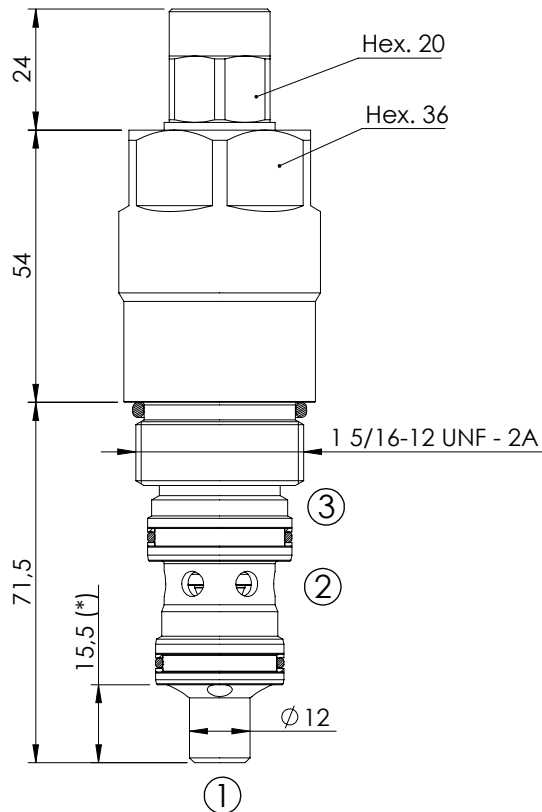


RELIEF VALVE

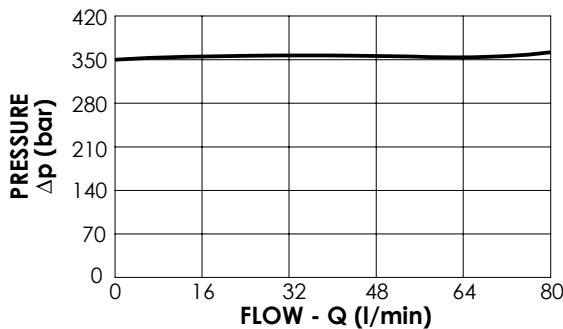
CPLT-080-DHNA

**DIRECT ACTING
STABILIZED PISTON
CHAMBER VENTED**



SPECIFICATIONS

Max. operating pressure:	420 bar
Rated flow:	80 l/min
Cavity:	SAE-16-3C
Weight:	0,75 kg



NOTES

Installation torque:	118 - 132 Nm
Seal kit:	RB100089
(*) : The cartridge exceed overall dimension of the standard cavity into port 1.	

ORDERING CODES

Quick code	Description	Standard setting (bar, Q=5 l/min)	Adjustment range (bar)	Pressure increase (bar/turn)
CP000171	CPLT-080-DHNA-HN-S16-V420	400	150-420	53
CP000513	CPLT-080-DHNA-HN-S16-V350	350	100-350	42
CP000501	CPLT-080-DHNA-HN-S16-V200	200	60-210	24
CP000514	CPLT-080-DHNA-HN-S16-V100	100	25-100	13
CP000515	CPLT-080-DHNA-HN-S16-V050	50	5-50	9