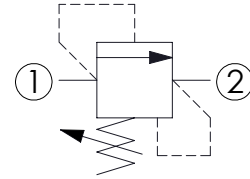
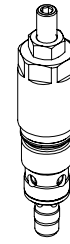
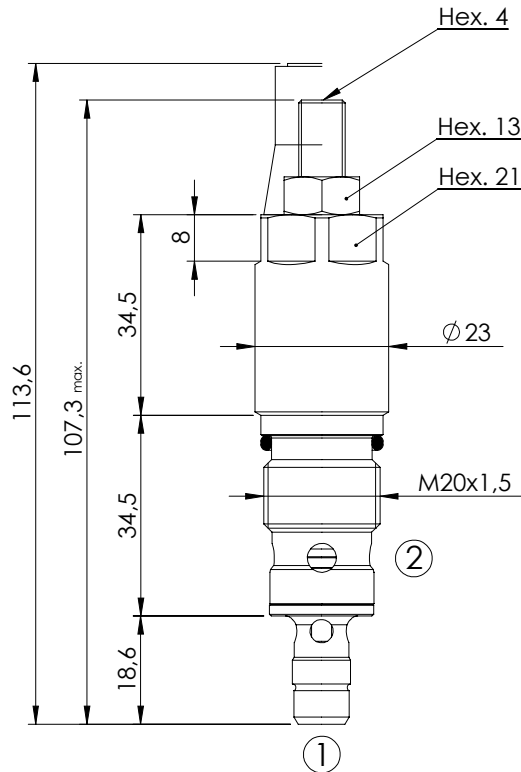


RELIEF VALVE

**CPLN-030-DPNA**

**DIRECT ACTING  
STABILIZED PISTON**

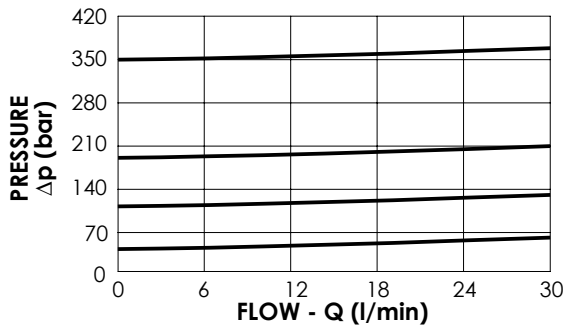
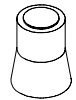


**SPECIFICATIONS**

Max. operating pressure:	420 bar
Rated flow:	30 l/min
Cavity:	VP000008
Weight:	0,17 kg

**SEALING CAP**

Ordering code:  
AT000020



**NOTES**

Installation torque:	40 - 45 Nm
Seal kit:	RC700008

**ORDERING CODES**

Quick code	Description	Standard setting (bar, Q=5 l/min)	Adjustment range (bar)	Pressure increase (bar/turn)
CP000124	CPLN-030-DPNA-HN-008-N420	350	250-420	104
CP000001	CPLN-030-DPNA-HN-008-N350	350	100-350	91
CP000019	CPLN-030-DPNA-HN-008-N200	200	50-210	42
CP000020	CPLN-030-DPNA-HN-008-N100	100	30-100	20
CP000032	CPLN-030-DPNA-HN-008-N050	50	10-50	10